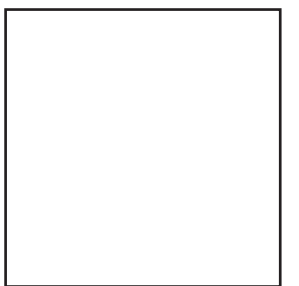
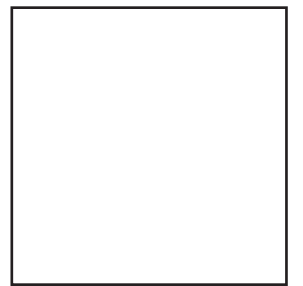
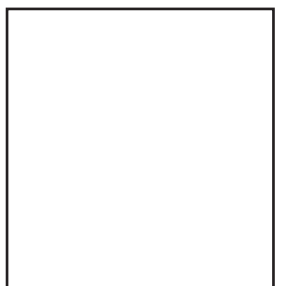
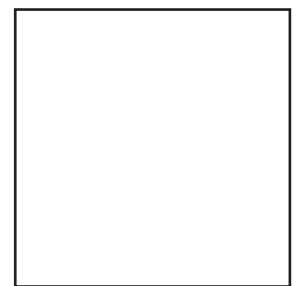


FOCUS ON CONTENT:

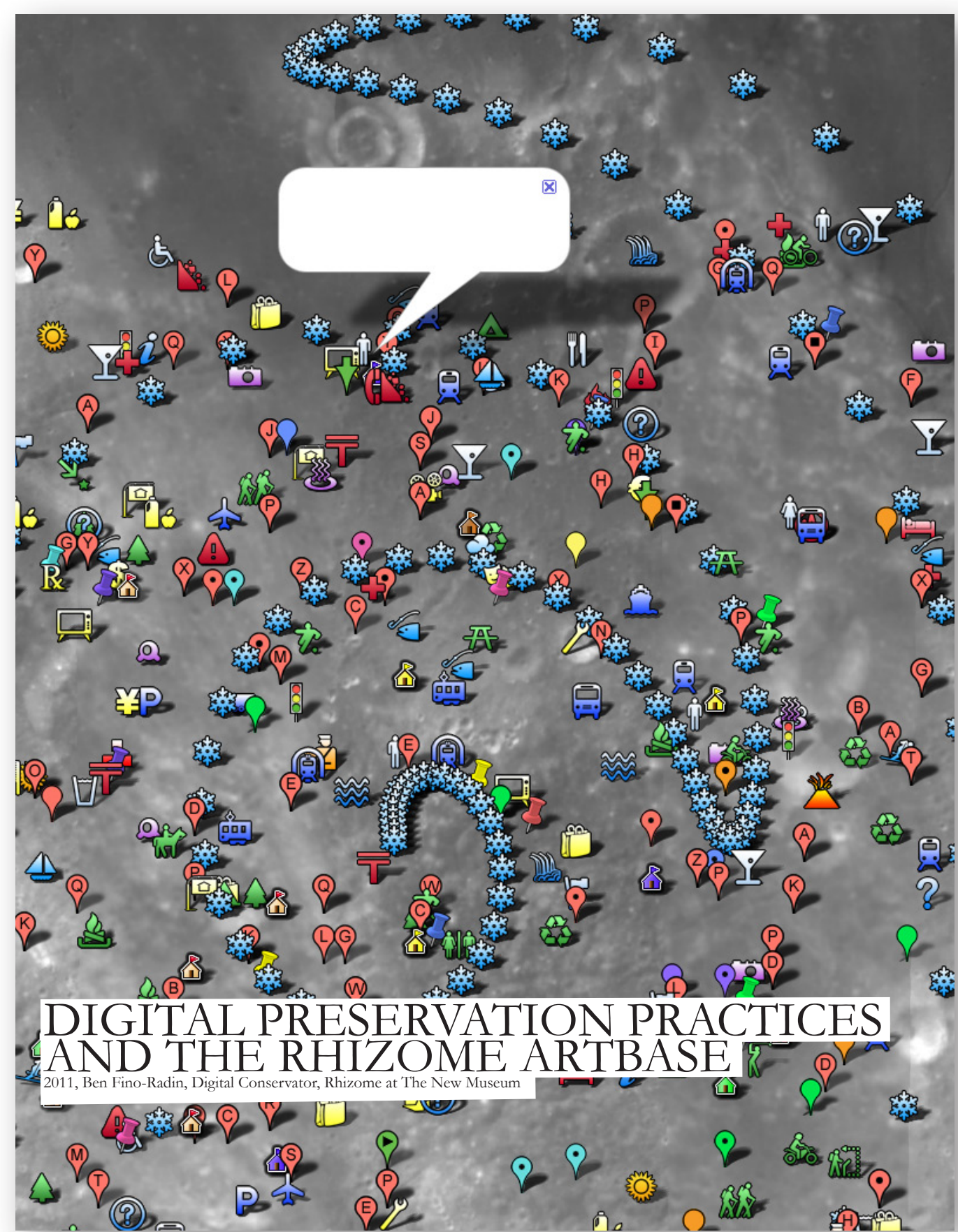
Developing Case Studies for At Risk Content

National Digital Stewardship Alliance Content Working Group



Arts & Humanities

Interested in the preservation of national, local, and regional web-based arts and humanities content such as websites, library digital collections, digital art, and digital humanities projects.



Government

Identifying best practices for all phases of the lifecycle of U.S. local, state, and government records.



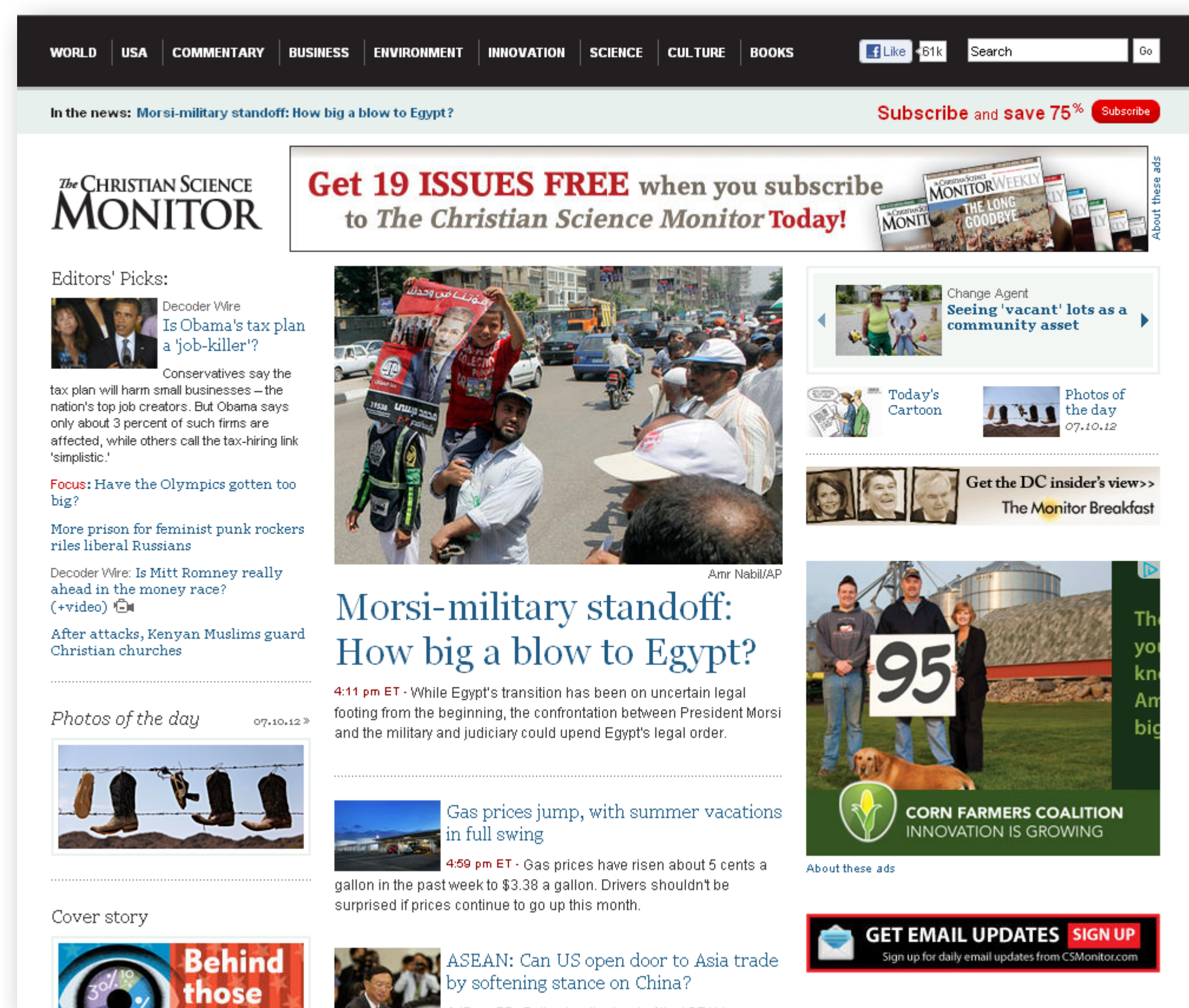
Social Sciences

Providing guidance and assessment on the life of social science data, including financial data (both numeric and textual) social survey data, and numeric data from long tail academic projects.



News, Media, & Journalism

Focusing on the preservation of national, local, regional news, citizen journalism and community news, including eprints and websites of news organizations.



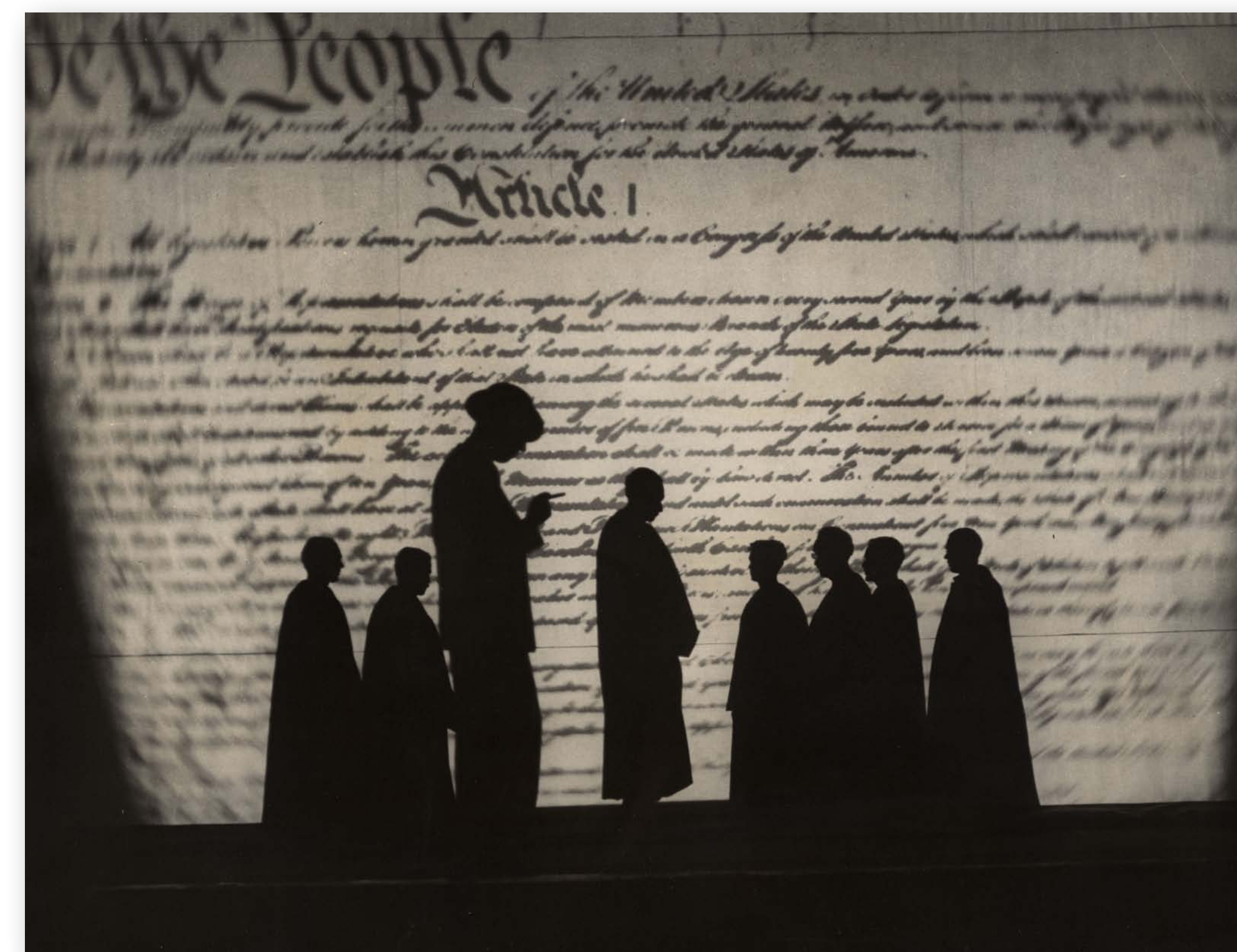
Science, Technology, Medicine & Mathematics

Focusing on blogs by healthcare professionals and patients, scientists, and engineers; blogs about science, health, math, and medicine; and other online content that documents professional work as well as citizen engagement in these topic areas.



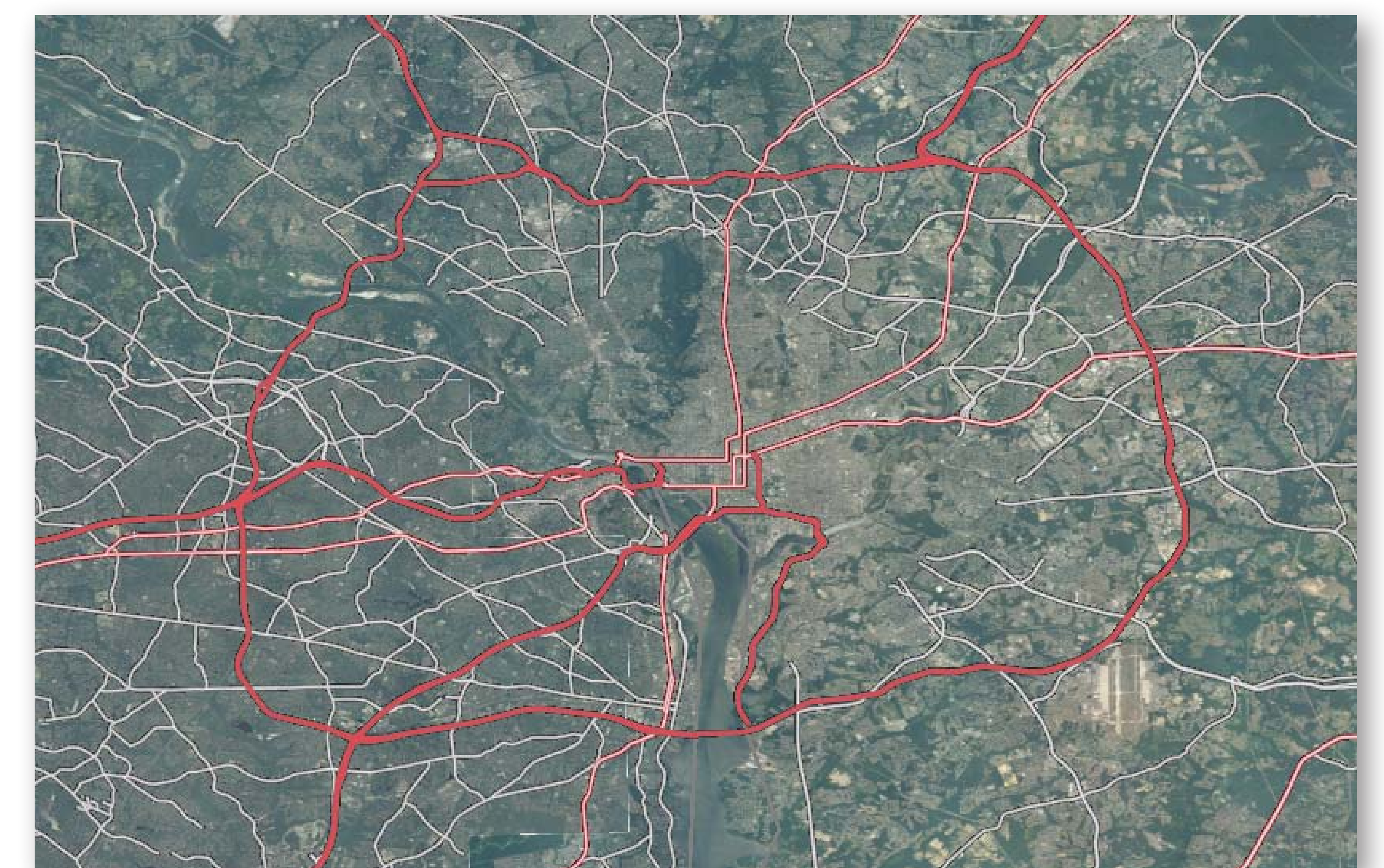
Cultural History

Focusing on the legacy of physical artifacts and intangible attributes of a group or society inherited from past generations, maintained in the present, and bestowed upon future generations (documents, photos, imprints, web-based materials, and digitized original source material).



Geospatial

Exploring challenges and solutions to the long-term preservation, stewardship and accessibility of digital mapping information.



NDSA Content Working Group

has formed teams to explore and develop case studies around specific content types.

Case Studies will:

- Establish value/rationale for collecting
- Document recognized opportunities
- Describe target audiences
- Outline a plan for educating stakeholders
- Identify obstacles or risk factors
- Identify actionable items—what can we do next, as a community